



Publications Committee

Agenda

Administration Conference Room

Thursday, March 10, 2016

1:00 p.m.

1. Call to Order/Pledge of Allegiance
2. Roll Call/Notice of Quorum
3. Chair's Announcements
 - a. Introduction of Guests and Staff
 - b. Rules of Order
 - c. Chair's Report
4. Approval of Minutes
 - a. Minutes of January 15, 2016 (pp.1-4)
5. Shareholder/Member Comments – Agenda Items Only
(Limited to 3 minutes per person)
6. Correspondence
 - a. Letters to the Editor
7. Unfinished Business
 - a. Spotlight Entertainment – Update
 - b. "Profiles" – Update
 - c. Recommend to Architectural Design & Review Committee – Newspaper Stands –Update (pp. 5-9)
8. New Business
 - a. Seal Beach Crime Report for Publication in the News (pp. 10-12)
9. Policies
 - a. Adopt/Revise (No Action)
 - b. Rescind (No Action)
10. Staff Reports
 - a. Executive Director

11. President's Comments
12. Shareholder Member Comments
(Limited to 3 minutes per person)
13. Committee Member Comments
14. Next Meeting – Thursday, April 14, 2016 at 1:00 p.m. in the Administration Conference Room.
15. Adjournment
 - a. March 17, 2016 – Minutes distributed and posted on the website
 - b. March 31, 2016 – Agenda items are due to the Recording Secretary
 - c. April 7, 2016 – Agenda packets are to be distributed and posted on the website



PUBLICATION COMMITTEE MINUTES
January 14, 2016

The regular meeting of the Publications Committee, held on Thursday, January 14, 2016, was called to order at 1:00 p.m. by Chair Greer in the Administration Conference Room, followed by the Pledge of Allegiance.

ROLL CALL

Present:	Ms. M. Greer, Chair	Mrs. L. Perrotti
	Mr. T. Bolton	Ms. P. Snowden
	Mr. P. Hood	
Absent:	Mr. P. Friedman	
	Mrs. J. Reed	
	Ms. R. Winkler, Ex-officio	
Staff and Guests:	Mr. R. Ankeny, Executive Director	
	Ms. R. Osborne, Sec. Writer / Staff Writer	
	Mrs. M. McAuley, Recording Secretary	
	Mr. R. Stone, GRF Representative, Mutual One	
	Mr. P. Moore, GRF Representative, Mutual Seventeen	
	One Foundation Member	

INTRODUCTION OF GUESTS AND STAFF

The Chair welcomed the Committee members, staff, and shareholder/members.

RULES OF ORDER

The Chair asked that courtesy and respectfulness be acknowledged at all times, to wait until the Chair calls on you to speak, no cross talking and to silence your cell phone.

APPROVAL OF MINUTES

Chair Greer declared the minutes of the regular meeting of December 8, 2015, approved, as printed.

CORRESPONDENCE

The Committee reviewed five letters; a thank you/acknowledgement letter will be sent. where appropriate.

UNFINISHED BUSINESS

Spotlight Entertainment

The Executive Director presented a sample of the Spotlight Entertainment magazine. It was the consensus of the Committee to move forward with the publication.

"Did You Know?"

It was the consensus of the Committee to change the name of "Did You Know" future publication to "Profiles".

NEW BUSINESS

Community Navigator

Ms. Snowden MOVED, seconded by Mr. Hood and carried unanimously by the Committee members present –

TO approve the cancellation of the Community Navigator and revisit in January 2017.

Recommendation to Architectural Design & Review Committee – Newspaper Stands

It was the consensus of the Committee to refer the replacement of newspaper stands to the Architectural Design & Review Committee.

POLICIES

The members discussed the policies under the purview of the Publications Committee.

Mr. Bolton MOVED, seconded Ms. Snowden and carried unanimously –

TO recommend to the GRF Board of Directors adoption of Policy 4191-36, Commissions, and the amendment of Policies 2810-36, Community Submissions; 2811-36, Golden Rain News Coverage of Candidates Running for Public Office; 2825-36, Special Columns; Procedure 2840.1-36, Subscriptions Procedure, Policy 2840.2-36, Deadlines; 2840.3-36, Delivery and Subscriptions; 2840.4-36, News Stories; 2840.6, Obituaries; 2840.7-36, News Photos; 2840.8-36, News Coverage; 2840.9-36, Collection Point; 2850-36, Advertising Commissions; 2851-36, Advertising; 2860-36, Advertising Rates; 2861-36, Advertising for Estate and Patio Sales.

STAFF REPORTS

Executive Director

The Executive Director spoke on the telephone book cover.

COMMENT PERIOD

Shareholder / Member Comments

One Foundation member spoke on items pertaining to the Committee's area of purview.

Committee Member Comments

Committee members spoke on the amendment of policies and the good organization of the meeting.

ADJOURNMENT

The next monthly meeting will be on Thursday, February 11, 2016, at 1:00 p.m. in the Administration Conference Room.

The meeting was adjourned at 2:03 p.m.

Mary Ruth Greer, Chair
COMMUNICATIONS COMMITTEE
MM 1.10.16

RECAP OF THE COMMUNICATIONS COMMITTEE MEETING
January 14, 2016

MOTIONS

- Chair Greer declared the minutes of the regular meeting of December 8, 2015, approved, as printed;
- **TO** change the name of the future publication “Did You Know?” to “Profiles”;
- **TO** approve the cancellation of the Community Navigator and revisit in January 2017;
- **TO** recommend to the GRF Board of Directors adoption of Policy 4191-36, Commissions, and the amendment of Policies 2810-36, Community Submissions; 2811-36, Golden Rain News Coverage of Candidates Running for Public Office; 2825-36, Special Columns; Procedure 2840.1-36, Subscriptions Procedure, Policy 2840.2-36, Deadlines; 2840.3-36, Delivery and Subscriptions; 2840.4-36, News Stories; 2840.6, Obituaries; 2840.7-36, News Photos; 2840.8-36, News Coverage; 2840.9-36, Collection Point; 2850-36, Advertising Commissions; 2851-36, Advertising; 2860-36, Advertising Rates; 2861-36, Advertising for Estate and Patio Sales.

ACTIONS

- The next monthly meeting will be on Thursday, February 11, 2016, at 1:00 p.m. in the Administration Conference Room;
- The Committee reached consensus to refer the replacement of newspaper stands to the Architectural Design & Review Committee.

SHEETMETAL FREE DISTRIBUTION BOXES

7/1/2015

MODEL C2008 TABLOID

STANDARD FEATURES

- * POWDER COATED BLACK OR WHITE
- * SHEETMETAL PAPER DOOR
- * SHEETMETAL SHELF
- * .080 DOOR PLASTIC
- * 3/4" TABLOID PAPER HOLDER

OPTIONAL FEATURES

- + CONCRETE WEIGHT TRAY
- + IMPRESSIONS
- + SILK SCREEN CHARGE



WITH OPTIONAL IMPRESSIONS

RACK DIMENSIONS: 36" HIGH - 14 3/4" DEEP - 16" WIDE
MAXIMUM PAPER CAPACITY: 29" - WEIGHT 40 LBS.

MODEL FST 2008 TABLOID

STANDARD FEATURES

- * POWDER COATED BLACK OR WHITE
- * SHEETMETAL PAPER DOOR
- * SHEETMETAL SHELF
- * .080 DOOR PLASTIC
- * 3/4" TABLOID PAPER DOOR

OPTIONAL FEATURES

- + CONCRETE WEIGHT TRAY
- + IMPRESSIONS
- + SILK SCREEN CHARGE



WITH OPTIONAL IMPRESSIONS

RACK DIMENSIONS: 42" HIGH - 14 3/4" DEEP - 16" WIDE
MAXIMUM PAPER CAPACITY: 29" - WEIGHT 44 LBS.

MODEL ST 91SD

STANDARD FEATURES

- * POWDER COATED BLACK OR WHITE
- * SHEETMETAL PAPER DOOR
- * SHEETMETAL SHELF
- * .080 DOOR PLASTIC
- * 3/4" PAPER HOLDER
- * HEAVY DUTY BASE

OPTIONAL FEATURES

- + WIRE SHELF
- + 11" x 17" OPEN TOP CARDHOLDER
- + CONCRETE WEIGHT TRAY
- + IMPRESSIONS
- + SILK SCREEN CHARGE



WITH OPTIONAL IMPRESSIONS

RACK DIMENSIONS: 39 1/2" HIGH - 16 1/4" DEEP - 19 1/4" WIDE
MAXIMUM PAPER CAPACITY: 26" - WEIGHT 57 LBS.

MODEL BST91-ECONOMY

STANDARD FEATURES

- * POWDER COATED BLACK OR WHITE
- * SHEETMETAL PAPER DOOR
- * SHEETMETAL SHELF
- * .080 DOOR PLASTIC
- * 3/4" PAPER HOLDER

OPTIONAL FEATURES

- + 11" x 17" OPEN TOP CARDHOLDER
- + CONCRETE WEIGHT TRAY
- + SHELF DIVIDER
- + IMPRESSIONS
- + SILK SCREEN CHARGE



RACK DIMENSIONS: 35 3/4" HIGH - 16 1/4" DEEP - 19 1/4" WIDE
MAXIMUM PAPER CAPACITY: 26" - WEIGHT 50 LBS.

MODEL 39

STANDARD FEATURES

- * POWDER COATED BLACK OR WHITE
- * SHEETMETAL PAPER DOOR
- * SHEETMETAL SHELF
- * .080 DOOR PLASTIC
- * 3/4" PAPER HOLDER
- * HEAVY DUTY BASE

OPTIONAL FEATURES

- + BROADSHEET, TABLOID, OR PLASTIC DOOR
- + IMPRESSIONS
- + SILK SCREEN CHARGE
- + DOME TOP AVAILABLE - CALL FOR DETAILS



MODEL 39-TAB-PD



MODEL 39-TAB-TAB

RACK DIMENSIONS: 39" HIGH - 16 1/4" DEEP - 19 1/4" WIDE
PAPER CAPACITY FOR EACH COMPARTMENT: 16" - WEIGHT 70 LBS.

MODEL ST39

STANDARD FEATURES

- * POWDER COATED BLACK OR WHITE
- * SHEETMETAL PAPER DOOR
- * SHEETMETAL SHELF
- * .080 DOOR PLASTIC
- * 3/4" PAPER HOLDER
- * HEAVY DUTY BASE

OPTIONAL FEATURES

- + BROADSHEET, TABLOID, OR PLASTIC DOOR
- + IMPRESSIONS
- + SILK SCREEN CHARGE



MODEL ST39-TAB-PD



MODEL ST39-B-TAB

RACK DIMENSIONS: 39" HIGH - 16 1/4" DEEP - 19 1/4" WIDE
PAPER CAPACITY FOR EACH COMPARTMENT: 16" - WEIGHT 70 LBS.

METAL DOOR OPTIONS:

BROADSHEET (B) STANDARD OR 50 WEB
TABLOID (TAB) STANDARD OR 50 WEB
PLASTIC DOOR (PD) - SPECIFY SIZE OF PUBLICATIONS

	10-49 SLEEVED	50-UP SLEEVED
C2008 TABLOID.....	\$174.54	\$168.07
FST 2008.....	\$191.38	\$184.90
ST91SD.....	\$229.44	\$222.96
BST91 ECONOMY.....	\$187.14	\$180.68
39.....	\$257.71	\$251.24
39ST.....	\$263.38	\$256.91

**\$500
MINIMUM
ORDER
CHARGE**

**FOR QUANTITIES
LESS THAN 10 -
CALL FOR QUOTE**

SPECIFY PUBLICATION SIZE WHEN ORDERING

OPTIONS	
COLORS OTHER THAN BLACK OR WHITE.....	ADD 20.00 EA.
11" x 17" OPEN TOP CARDHOLDER.....	ADD 12.39 EA.
SHELF DIVIDER.....	ADD 4.73 EA.
WIRE SHELF.....	ADD 3.03 EA.
CONCRETE WEIGHT TRAY.....	ADD 8.61 EA.
SPECIAL PUBLICATION SIZE DOOR CUTOUT.....	ADD 9.64 EA.
IMPRESSIONS.....	ADD 3.30 EA.
SILKSCREENS: PER COLOR	
CARDHOLDER.....	ADD 182.85 EA.
PAPER DOOR.....	ADD 144.34 EA.
SIDE OR BACK.....	ADD 269.45 EA.

M.E.R. INC.
MECHANISM EXCHANGE & REPAIR, INC.

P.O. BOX 311 - 210 E. HOCHHEIM ST.
YOAKUM, TX 77995-0311 USA
(361) 293-6452 FAX (361) 293-9175
E-MAIL: mechx@sbcglobal.net
www.mernewsrack.com



MODEL C91-ECONOMY DISTRIBUTION BOX

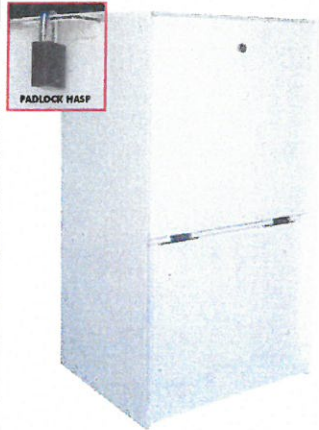
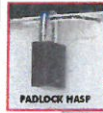
7/1/2015

ELECTRO-GALVANIZED METAL - POWDER COATED
CHAIN HOLES IN BACK

RACK DIMENSIONS: 35 3/4" HIGH - 16 1/4" DEEP - 19 1/4" WIDE
MAXIMUM PAPER CAPACITY: 29" - WEIGHT 50 LBS.



SHOWN WITH DOME TOP (BACK)
& BROADSHEET DOOR
42" H - 58 LBS



APT. / STORAGE BOX
SPECIFY: LOCK OR PADLOCK HASP
35 3/4" H - 52 LBS



C91 ECONOMY
35 3/4" H - 52 LBS



SHOWN WITH ROUNDED DOME TOP
& TABLOID DOOR
42" H - 58 LBS



SHOWN WITH DOME TOP (FRONT)
& BROADSHEET DOOR
42" H - 58 LBS



SHOWN WITH ANGLED DOME TOP (BACK)
& TABLOID DOOR
42" H - 58 LBS

TABLOID OR BROADSHEET

50 UP SLEEVED ONLY.....\$160.33 EA.

10 SLEEVED ON PALLET.....\$161.84 EA.

LESS THAN 10 - CALL FOR QUOTE

\$500.00 MINIMUM ORDER CHARGE

STANDARD FEATURES:

- * POWDER COATED WHITE OR BLACK
- * SHEETMETAL PAPER DOOR (SPECIFY BROADSHEET OR TABLOID)
- * SHEETMETAL SHELF (REMOVEABLE FOR ADDING WEIGHT TRAY)
- * .080 DOOR PLASTIC
- * 3/4" PLASTIC PAPER HOLDER

OPTIONAL FEATURES:

* POWDER COATED COLORS OTHER THAN BLACK OR WHITE.....	ADD	\$20.00
* HEAVY DUTY BASE (7 lbs).....	ADD	\$30.17
* DOOR STOP (1lbs).....	ADD	\$9.05
* DOME TOP FRONT/BACK (8 lbs).....	ADD	\$43.76
* ANGLED DOME TOP FRONT/BACK (8 lbs).....	ADD	\$30.00
* ROUNDED DOME TOP FRONT/BACK (8 lbs).....	ADD	\$52.81
* 11" X 17" OPEN TOP CARDHOLDER (2 lbs).....	ADD	\$12.39
* WIRE SHELF.....	ADD	\$3.03
* CONCRETE WEIGHT TRAY (2 1/2" X 13" X 17 3/4")(3 lbs).....	ADD	\$8.61
* 4 1/2" X 4 1/2" CUTOUT IN SHEETMETAL SHELF RIVETED IN.....	ADD	\$3.03
* SHEETMETAL SHELF WITH DIVIDER (2 lbs).....	ADD	\$4.73
* SPECIAL SIZE PUBLICATION DOOR CUT OUT.....	ADD	\$9.64
* BOXED FOR SHIPMENT (6 lbs).....	ADD	\$15.49
* IMPRESSIONS PER COLOR:.....	ADD	\$3.30
* SILK SCREENS PER COLOR:.....	CUSTOMER TO FURNISH ARTWORK	
PAPER DOOR.....		\$144.34
CARDHOLDER OR TOP.....		\$182.85
SIDE OR BACK.....		\$269.45

CALL CUSTOMER SERVICE
FOR PRICING & FREIGHT QUOTES

M.E.R.INC.

MECHANISM EXCHANGE & REPAIR, INC.

P.O. BOX 311 - 210 E. HOCHHEIM ST.
YOAKUM, TX 77995-0311 USA
(361) 293-6452 FAX (361) 293-9175
E-MAIL: mechx@sbcglobal.net
www.mernewsrack.com

DISPLAYS2GO

US ▼

2-Tiered Acrylic Newspaper Rack with Black Base for Floor, Separate Header - Clear

SKU: NRACSHBASE



- 2 Shelf Design Keeps Newspapers Organized
- Separate Pocket for Storing 1 Newspaper
- Includes Black Base for Floor Use
- Holds up to 75 Papers

\$222.06 / Each (USD)

ADD TO CART

★ SAVE TO WISH LIST

Description

2 Shelf Newspaper Rack- Black Base

Organize your local and national publications with this freestanding 2 shelf newspaper rack. There is plenty of room to stack more than 75 standard newspapers, or approximately 20 Sunday editions. There is a pocket at the top of the stand where you can place a copy of today's paper so that customers can see the front page news. For consistency in your store's look, purchase a separate newspaper stand for each national or local edition that you stock.

Your display will arrive in two boxes - the base in one and the acrylic parts in the other. Assemble the acrylic newspaper holder first, using the locking tabs found on the edges of the shelves and side walls. (Follow the directions on the included instruction sheet.) Then position the acrylic display on top of the base and use the provided screws to secure it in place. Now your display is ready to be filled with the daily news!

Specifications

SKU	NRACSHBASE
Overall Width x Height x Depth	16.5" x 40.5" x 14.5"
Header Width x Height	14.5" x 11.5"
Weight	34.0lbs
Material	Acrylic
Color	Clear
Placement Style	Floor Standing
Number of Tiers	2

Ordering Information

In Stock

Order by 2PM Eastern Time US for same day shipping.

Reviews

Browse reviews from customers who have already purchased this product.

🗨 This product has not been reviewed yet. Be the first.

 [Write a Review \(/Review/Write/4667\)](/Review/Write/4667)

Questions & Answers



IN STOCK

Order in the next **19 hrs 4 mins** and this item will ship on **Friday, March 4, 2016**.

Quantity	Price Each (USD)
1	\$222.06
2 - 4	\$211.97
5 - 13	\$186.73
14 - 33	\$176.64
34 +	📞 Contact Us (/ContactUs)
1	ADD TO CART

Copyright © 2016 George Patton Associates, Inc. All Rights Reserved



Golden Rain Foundation

Leisure World, Seal Beach

COMMITTEE ACTION REQUEST

TO: PUBLICATIONS COMMITTEE
FROM: EXECUTIVE DIRECTOR
SUBJECT: PUBLICATION OF SEAL BEACH CRIME STATISTICS IN THE NEWS
DATE: MARCH 4, 2016
CC: FILE

City of Seal Beach residents who receive a water bill from the City received a flyer citing the 2015 crime rates in Seal Beach. It has been recommended that this information be published in the News since the shareholder/members do not receive individual water bills.

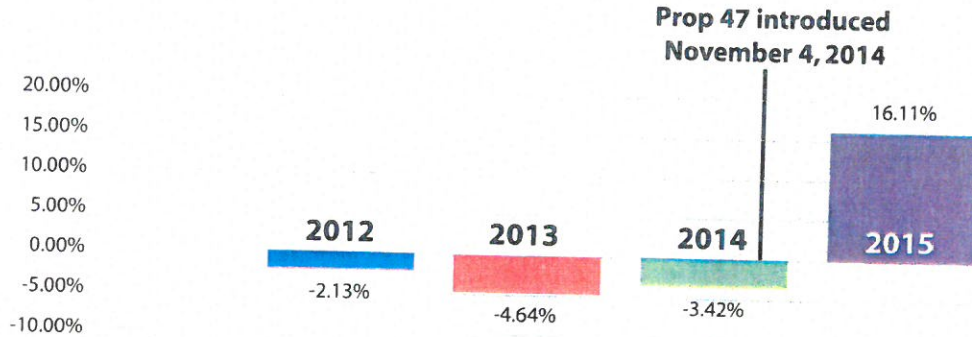
Motion to recommend the City of Seal Beach crime rate flyer be published in the News.

2015

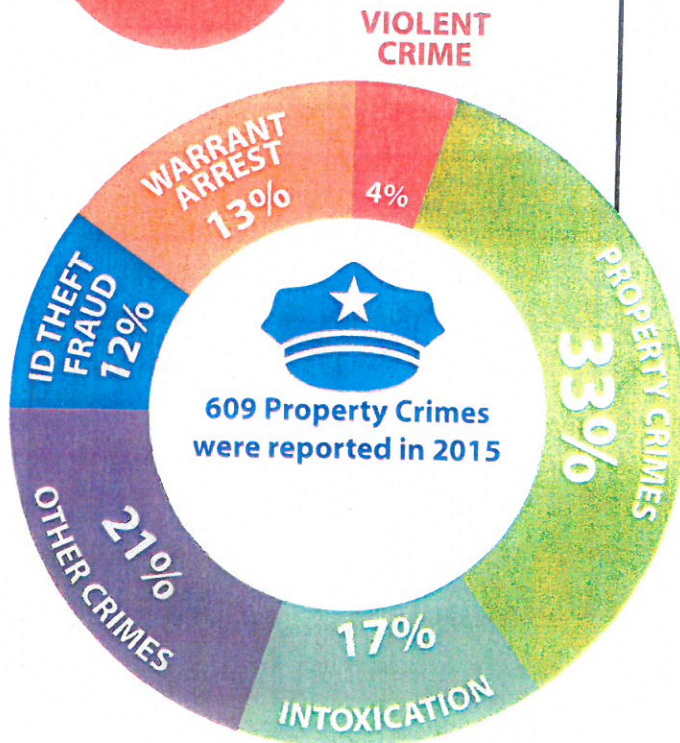
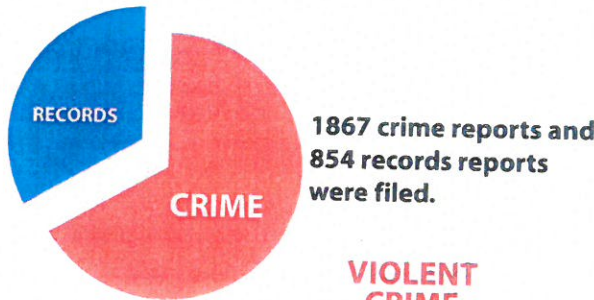
CRIME IN SEAL BEACH

For many years, both Seal Beach and California as a whole experienced continued reductions in crime. However, in 2015, crime rates increased statewide. Many attribute this increase to recent changes in legislature.

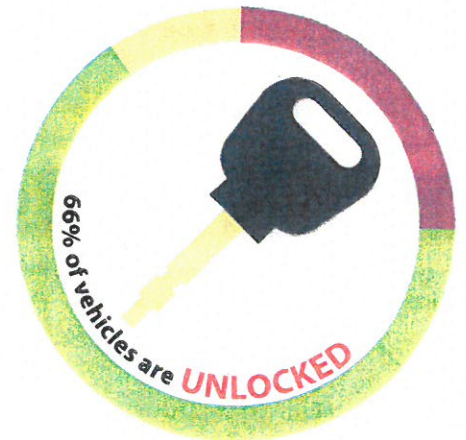
The Seal Beach Police Department is working tirelessly to combat this emerging trend. Let's take a look at local crime in Seal Beach and some of the ways we can reduce crime in our community.



2015 IN REVIEW



PROPERTY CRIMES



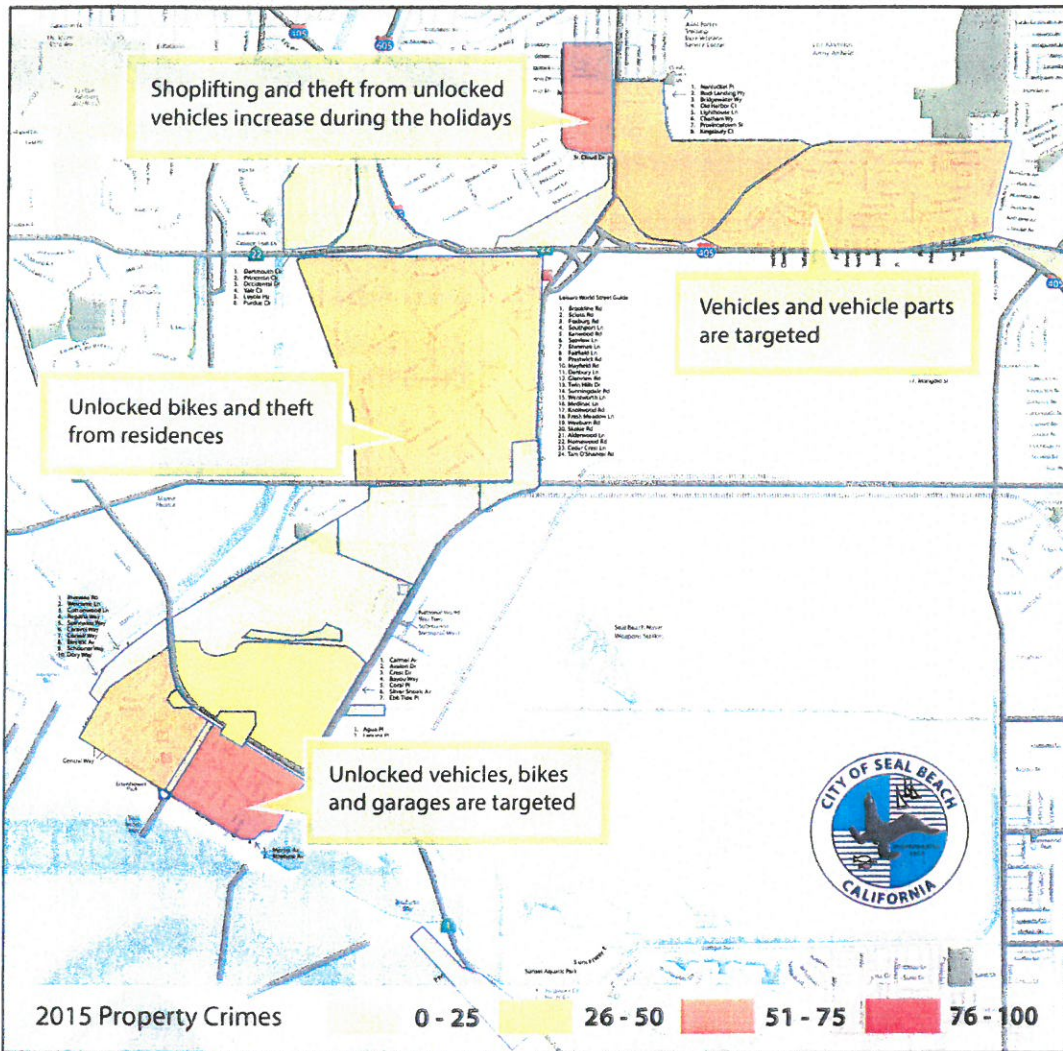
- Theft accounted for 67% of all property crimes
- Burglary: 24%
- Motor vehicle theft: 9%



820 arrests were made in 2015

SOURCE Seal Beach CADRMS

PROPERTY CRIME BY DISTRICT



MAKING OUR CITY SAFER

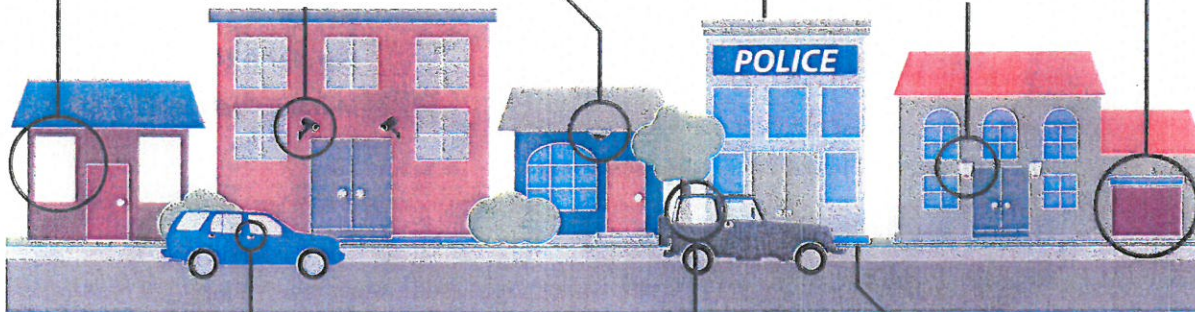
Connect lamps to automatic timers and turn them on in the evening and off during the day.

The most important thing you can do is call the police to report a crime or any suspicious activity. You are the eyes of your neighborhood.

Lock all outside doors and windows before you leave the house or go to bed. Even if it is for a short time, lock your doors.

Alarm systems and surveillance cameras are excellent for home security. They act as deterrents and provide peace of mind.

Have adequate exterior lighting. Motion-sensitive lights are recommended for backyards.



Lock and remove the keys from your vehicle. Roll windows up and close the sunroof. Always ensure that your vehicle is fully secured.

Remove all valuable items (laptops, GPS devices, cellphones, wallets, purses, shopping bags) from your vehicle and never leave property in plain view.

If you will be out of town for an extended amount of time, the Seal Beach Police Department will provide extra patrol checks. Fill out an application at the Police Department.