



Security, Bus and Traffic Committee

Agenda

Administration Conference Room

Wednesday, December 9, 2015 at 1:00 p.m.

1. Call to Order/Pledge of Allegiance
2. Roll Call/Notice of Quorum
3. Chair's Announcements
 - a. Introduction of Guests and Staff
 - b. Rules of Order
 - c. Chair's Report
4. Approval of Minutes of November 2, 2015
5. Shareholder/Member Comments – Any Item (*Limited to 3 minutes per person*)
6. Correspondence (Fire Lane Needs) (page 2)
7. Old Business
 - a. Parking and Traffic Sub-Committee Report / Policy 1926-37
 - b. Recreational Vehicle Parking at Clubhouse Four
 - c. Transportation Sub-Committee Report
8. New Business
 - a. Purchase of Radar Gun with Built-in Camera (pages 3-6)
 - b. Designated Parking on Canoe Brook across from Purchasing
 - c. Repaint Fire Hydrant Curbs
9. Staff Reports
 - a. Security Chief (page 7)
 - b. Fleet Manager (pages 8-10)
 - c. Executive Director
10. President's Comments
11. Committee Member Comments
12. Next Meeting/Adjournment

Jaime Guerrero

From: Verdenne, Tony <TonyVerdenne@ocfa.org>
Sent: Tuesday, November 17, 2015 3:28 PM
To: Jaime Guerrero
Cc: Bass, Kevin; McClelland, Tracy
Subject: RE: Leisure World - Foxburg Road

It was my pleasure to meet with you Jaime. Per our conversation, and according to Assistant Fire Marshal Bass, we will be more than happy to help you with your fire lane needs. We can review, approve, and document your emergency access plans between our office staff, that serves your city. This will save you time and from any review fees. The plans can then be used as permanent documents, and forwarded to the Police Department for their review and assistance with your parking conditions. We recommend that you hire a contractor to survey your site, streets, and parking needs. You may also want to consider a PR, and/or educational outreach program, regarding the parking changes to come. Please call me, should you have any questions or need any help.

Thank you for your help and support,



Tony Verdenne

Orange County Fire Authority Fire Prevention Specialist
8081 Western Avenue Buena Park, CA 90620
Office 714.527.4584 Fax 714.229.8806

"We visualize problems and solutions through the eyes of those we serve"
OCFA Website Ready-Set-Go



From: Jaime Guerrero [mailto:JaimeG@lwsb.com]
Sent: Tuesday, November 17, 2015 1:55 PM
To: Verdenne, Tony
Subject: Leisure World - Foxburg Road

Good Afternoon Tony,

Thanks again for coming out on such short notice. Please find my contact information as requested below.

Jaime Guerrero

Security Chief
Golden Rain Foundation
PO Box 2069, Seal Beach, CA 90740



☎ (562) 431-6586, ext. 279 | ✉ jaimeg@lwsb.com | 🌐 www.lwsb.com

CONFIDENTIALITY NOTICE: If you have received this e-mail in error, please immediately notify the sender by e-mail at the address shown. This e-mail transmission may contain confidential information. This information is only for the use of the individual or entity to which it is intended even if addressed incorrectly. Please delete it from your files if you are not the intended recipient. Thank you for your compliance. The Golden Rain Foundation is not responsible for any virus that may be with an e-mail attachment. It is the responsibility of the recipient to utilize anti-virus scanning prior to opening any attached documents.

Validity Date: 01/03/16
Date: 12/03/15

To: Golden Rain Foundation (Seal Beach, US)
PO Box 2069
Seal Beach California 90740
United States

LTI Rep: Joe Cronn
Phone: 360.798.9928
Email: jcronn@lasertech.com

Attn: Jaime Guerrero
Phone: 562-431-6586
Email: jaimeg@lwsb.com

Shipping Method	FOB Point	Payment Terms
FedEx Ground	Centennial, CO	PrePay

Special Instructions:

Qty	Item	Description	Unit Price	Total
1	7005700	LTI 20-20 TRUCAM	\$5,995.00	\$5,995.00
TERMS AND CONDITIONS: Prices noted above are not valid with any other quotes or offers. Pricing does not include applicable sales tax. A 15% restocking fee will be added to all cancelled or returned orders. Shipping charges are estimated and subject to change. Please allow 3-4 weeks for delivery, unless otherwise specified. Quote valid for 30 days.			Subtotal	\$5,995.00
			Sales Tax@8.00%	\$479.60
			Freight	\$25.00
			Total(USD)	\$6,499.60

Authorized By Date

Authorized By Date

TruCAM® Part #7005700 Includes:



TruViewer
Software CD
#3204700



Shoulder Stock
#7204780



TruCAM Battery
Pack Assembly
#7024922



Sun Shade
#1434173



Charging Plugs (4)
#3004936
Battery Pack
Charger
3004971



Premium Hard
Case w/Foam
#7035144



LED Stylus (3)
#1434164



SDHC 8GB Card
#3204714



SD Card Reader
#3204699



TruCAM Daytime
Filter Assembly
#7024791



TruCAM Features:



SD Card Slot



Access to Camera Lens



TruCAM Video Laser



Stylus Holder



Interface Buttons



Rear Screen

TRUCAM® VIDEO LASER



THE NEXT GENERATION OF INDISPUTABLE EVIDENCE

The TruCAM® is the first all-in-one, laser-based video camera. It collects and stores a complete chain of video evidence for both speeding and tailgating, along with a high-resolution image that identifies vehicle make, model and license plate number.

The TruCAM is the final word in traffic enforcement evidence. After all, a picture may be worth a thousand words, but a video tells the whole story.

FEATURES

- Tamper-proof data encryption
- Defeats laser jammers
- Save and record violations only within your desired speed limit
- Multiple operation modes

TruViewer software for archiving and post-processing



Easily accessible camera lens for quick focusing and iris levels

Built-in SD card slot for quick access to your violations

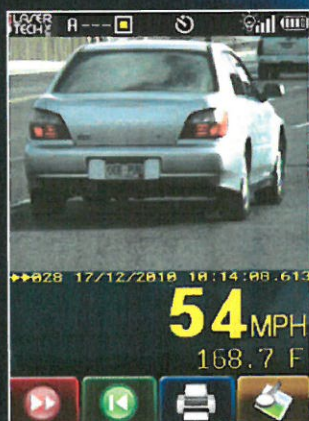


Color-coded buttons matching the touch-screen interface for alternative user operation

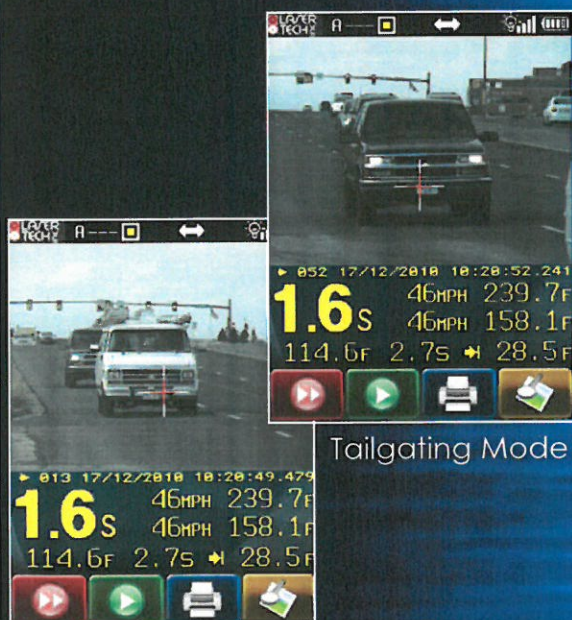
TRUCAM® VIDEO LASER



Speed Mode



Rear Plate Mode



Tailgating Mode

Standard TruCAM Modes: Speed Mode • Auto Mode
Rear Plate Mode • Video Only Mode • Weather Mode

Optional Upgrades: Dual Speed Mode • Tailgating Mode

SPECIFICATIONS

Weight:	3.3 lb (1.50 kg)
Size:	8.27 x 3.86 x 12.47 in (21.0 x 9.8 x 31.7 cm)
Construction:	Composite polycarbonate outer shell; aluminum internal chassis
Maximum Range:	4,000 ft (1,200 m)
Minimum Range:	
Speed Mode:	50 ft (15 m)
Weather Mode:	200 ft (60 m)
Continuous Mode:	50 ft (15 m)
Range Accuracy:	± 6 in (±15 cm) absolute accuracy
Display Resolution:	
Speed:	+ 1 mph (+ 2 km/h)
Range:	± 0.1 unit of measure
Speed Range:	± 200 mph (± 320 km/h)
Speed Accuracy:	± 1 mph (± 1 km/h)
Measurement Type:	Automode and single shot
Power:	
Battery Pack:	Lithium-ion polymer rechargeable battery pack (up to 15 hours of cordless operation)
Battery Charger:	
Main Charger:	110 v ac to 240 v ac
Automobile Charger:	11 v dc to 16 v dc
Communication:	RS232, serial communications port RS485, nighttime flash signal, USB 2.0, image data transfer, touch-panel input
Measurement Time:	0.33 sec
Environment:	NEMA 4/IP 55 water and dust resistant
Temperature Range:	14° to 140° F (-10° to +60° C)
Eye Safety:	FDA Class 1 (CFR 21) IEC 60825-1
Laser Wavelength:	905 nanometers nominal
Beam Divergence:	2.5 milliradians nominal hardware
Capture Data Storage:	Removable SD card (supports up to 2 GB and larger; SD and SDHC formats)
Display:	2.7 in (6.9 cm), 240 x 320 pixel, color, 18 bits per pixel (bpp)
Camera Lens:	3.1 megapixel (2048 x 1536) 75 mm
GPS Receiver:	20 channels firmware
Operating System:	Linux based
Anti-jam:	Automatic laser jammer avoidance
Video Size:	Standard format: 240 x 180 pixels, Extended format: 480 x 360 pixels
Video Modes:	LP (long play), EP (extended play)
Still Image Sizes:	Selectable (1920 x 1440 pixels or 1440 x 1080 pixels)
Data Encryption:	AES-128, U.S. Federal Information Processing Standards, Advanced Encryption, Standard 128 bit

All specifications are subject to change without notice (Rev 10.11)



Golden Rain Foundation

Leisure World, Seal Beach

MEMO

TO: RANDY ANKENY, EXECUTIVE DIRECTOR
FROM: JAIME GUERRERO, SECURITY CHIEF
SUBJECT: NOVEMBER SECURITY REPORT
DATE: DECEMBER 1, 2015
CC: GRF BOARD MEMBERS, MUTUAL PRESIDENTS,
CAROL WELLER, MUTUAL ADMINISTRATION MANAGER
JIM BREEN, GOLDEN RAIN NEWS

<i>November Monthly Reports</i>	<i>November 2015</i>	<i>2014</i>
• Death	10	18
• Fire	5	4
• Theft	13	10
• Vandalism	2	2
• Traffic Accident	16	13
• Social Services/Lost Resident	2	10
• Incident	46	51
• Injury	10	N/A
• Paramedic	168	100
• Care	29	99

<i>Additional Statistics</i>	<i>November 2015</i>	<i>2014</i>
• Misc. Resident Services	1720	1706
• Decals Issued	416	429
• Lock Outs	110	94
• SB Police Department	108	86
• Citations*	236	306
Pet Citations*	8	
Traffic Citations*	228	
Residents	Parking 113	Moving 1
Non-Resident	Parking 116	Moving 2
GRF Employee	Parking 1	Moving 0
LWHCC	Parking 0	Moving 0
Contractors	Parking 3	Moving 0
• Incoming Telephone Calls	17,714	
• Incoming Vehicles Screened at Gates	204,539*	
*(Main Gate In Counters Down)		

MEMORANDUM

TO: MARK WEAVER, COMMUNITY FACILITY MANAGER
FROM: GRANT WINFORD, AUTO SHOP / BUS SUPERVISOR
SUBJECT: MINIBUS MONTHLY REPORT NOVEMBER 2015
DATE: 12/02/15
CC: FARA QUIRIN

NOVEMBER 2015

TOTAL PASSENGERS: 3936 (4659) INCLUDING ACCESS)

DAILY AVERAGE MON-FRI: 164

2015 YEAR TO DATE: 51993 (59861) INCLUDING ACCESS)

PASSENGER TOTALS BY ROUTES FOR THE MONTH

<u>AM-BUS</u>	<u>A-BUS</u>	<u>B-BUS</u>	<u>C-BUS</u>	<u>D-BUS</u>	<u>PM-BUS</u>
113	706	923	766	1022	406

PASSENGER AVERAGE PER WEEKDAY BY ROUTE

<u>AM-BUS</u>	<u>A-BUS</u>	<u>B-BUS</u>	<u>C-BUS</u>	<u>D-BUS</u>	<u>PM-BUS</u>
6	35	46	38	33	5

THE ACCESS W/C BUS MADE 454 ONE WAY TRIPS FOR A DAILY AVERAGE OF 15 TRIPS PER DAY. THE ACCESS BUS PICKED UP 595 PASSENGERS IN THE MONTH OF NOVEMBER.

THE WEDNESDAY BUS TO TRADER JOE'S PROVIDED RIDES FOR 128 PASSENGERS FOR 4 WEDNESDAYS IN THE MONTH OF NOVEMBER.

**BUS ROUTE DAILY COUNTS
NOVEMBER 2015**

	DATE	AM	A	B	C	D	PM	AMP	TOTAL
SUN	1-Nov					51	29		80
	2-Nov	11	37	57	48	46	6		205
	3-Nov	4	32	56	49	35	5		181
	4-Nov	6	26	35	37	27	5		136
	5-Nov	5	40	47	31	40	5		168
	6-Nov	6	30	49	35	35	5		160
SAT	7-Nov					47	49		96
SUN	8-Nov					25	55		80
	9-Nov	6	23	35	44	23	3		134
	10-Nov	9	37	53	43	53	5		200
	11-Nov	2	29	46	26	22	7		132
	12-Nov	3	43	52	43	35	6		182
	13-Nov	2	28	59	46	36	2		173
SAT	14-Nov					42	35		77
SUN	15-Nov					44	32		76
	16-Nov	5	31	46	40	25	6		153
	17-Nov	3	38	46	49	34	3		173
	18-Nov	9	42	35	27	31	5		149
	19-Nov	6	42	40	31	34	5		158
	20-Nov	4	36	56	34	18	3		151
SAT	21-Nov					28	27		55
SUN	22-Nov					37	23		60
	23-Nov	4	41	49	38	42	7		181
	24-Nov	5	32	73	45	39	13		207
	25-Nov	12	45	24	29	29	7		146
HOL	26-Nov					21	11		32
	27-Nov	4	29	28	29	27	4		121
SAT	28-Nov					24	20		44
SUN	29-Nov					39	21		60
	30-Nov	7	45	37	42	33	2		166
									0
									3936
		113	706	923	766	1022	406	0	3936

WEEKDAY	113	706	923	766	664	104	0	3276
DAILY AVG:	6	35	46	38	33	5	0	164
WEEKEND/ HOLIDAY								
DAILY AVG:					358	302	0	660
					36	30	0	66
								3936

2.87% 17.94% 23.45% 19.46% 25.97% 10.32% 0.00% 100.00%

A decorative border of holly leaves and berries surrounds the text. A large holly leaf with three red berries is positioned in the top right corner.

Ride the Minibus and See the Lights

4th Annual Leisure World Holiday Lights Tour

The GRF Minibus service will be conducting a special Evening Bus tour to view the Holiday Light Displays within the Leisure World community. The tour will start at the Health Care Center.

Start Time: 5:50 PM
December 16 – 18 and 21 – 23

Late Start Tour: December 21 – 23
Start Time: 7:25 PM

Seating on the bus tours will be first-come, first-served.
GRF Minibuses seat approximately nineteen (19) passengers.

Passengers who ride to the Health Care Center on the regularly scheduled Evening Minibus will receive priority seating for the 7:25 PM tour.

At the conclusion of each tour, all passengers who need a ride will be taken home or to any other location inside Leisure World.

For information or questions contact Grant Winford at 565-431-6586 Extension 372.