



SPECIAL ARCHITECTURAL DESIGN & REVIEW COMMITTEE MINUTES

July 6, 2018

The meeting of the Special Architectural Design & Review Committee (ADRC) was held on Friday, July 6, 2018 and was called to order at 10:30 a.m. by Chair Heinrichs in Mission Park.

ROLL CALL

Present:	Ms. I. Heinrichs, Chair	Ms. S. Fekjar
	Mr. B. Crossley	Mr. B. Lukoff
		Ms. Stone, Ex-Officio
Absent:	Ms. S. Hopewell	

Also Present Mr. M. Weaver, Facilities Director

Chair Heinrichs greeted and welcomed everyone to the Architectural Design & Review Committee meeting and introduced Foundation members, guests and staff.

By unanimous consent, the Chair declared the reading of the quorum notification be dispensed with.

In accordance with California Civil Code Section 4090, please be advised that a quorum of the GRF Board of Directors is present at today's posted meeting. The business of the Architectural, Design and Review Committee will be conducted in accordance with the agenda. As a quorum of the Board is present, this meeting will be conducted as a committee meeting and a Board meeting. The agenda actions of the committee will be limited only to the members of the committee and will only constitute such actions in accordance with stated committee policy and/or provide recommendations to the GRF Board of Directors at its regular Board meeting on the 4th Tuesday of the month. GRF Board members who are not committee members will be allowed to comment when recognized by the Chair and only during the proscribed Foundation member comment period, not to exceed four minutes, as set forth in Policy 5610, Participation by Foundation Members. The minutes of today's Board meeting will be presented to the Board for approval following the approval of the committee meeting minutes in July 2018.

CHAIR'S ANNOUNCEMENTS

Chair Heinrichs welcomed the Committee members, guests and staff, including GRF President Linda Stone and Facilities Director Mark Weaver.

NEW BUSINESS

Mission Park

The Committee met at Mission Park.

It was Consensus of the Committee to approve the following: (See Attachments, Page 1-4)

PRESIDENT COMMENTS

There were no president's comments at the time of the meeting.

COMMITTEE MEMBERS COMMENTS

No shareholder/member spoke on items pertaining to the agenda.

SHAREHOLDER COMMENTS

No shareholder/member spoke on items pertaining to the agenda.

COMMITTEE MEMBERS COMMENTS

No committee/member comments at the time of the meeting.

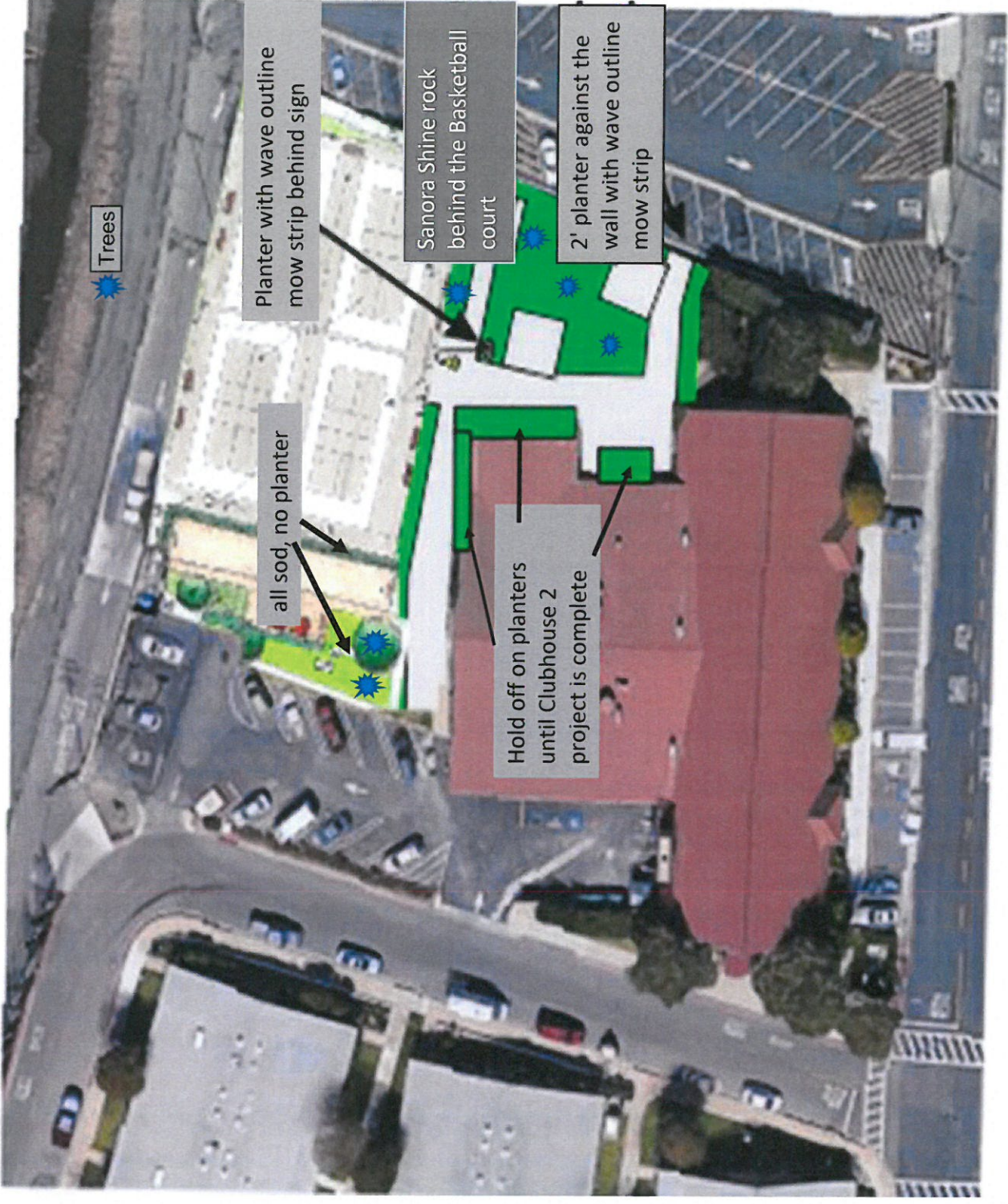
ADJOURNMENT

Chair Heinrichs adjourned the meeting at 11:30 a.m.



Irma Heinrichs, Chair
ARCHITECTURAL DESIGN & REVIEW COMMITTEE

cm 07.06.18



Trees

Planter with wave outline
mow strip behind sign

Sanora Shine rock
behind the Basketball
court

2' planter against the
wall with wave outline
mow strip

all sod, no planter


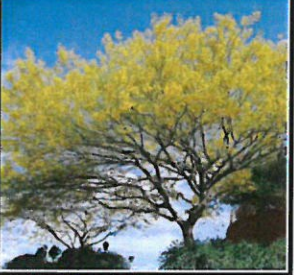



Hold off on planters
until Clubhouse 2
project is complete

GRF CLUBHOUSE TWO MISSION PARK PLANT LIST 7-12-18				
LOCATION	COUNT	SIZE	PLANT	
BOCCE BALL COURT	2	24" BOX	MULTI TRUNK STRAWBERRY TREES	
STATEMENT TREE AREA	1	48" BOX	THORNLESS MULTI TRUNK PALO VERDE TREE	
STATEMENT TREE AREA	21	ONE GALLON	7 EACH: SOCIETY GARLIC, AGAPANTHUS, DAYLILY	
PICKLEBALL COURT PLANTERS (2)	87	ONE GALLON	29 EACH: SOCIETY GARLIC, AGAPANTHUS, DAYLILY	
PARKING LOT WALL	14	FIVE GALLON	7 EACH: CAPE HONEYSUCKLE & SWEET MEMORIES	
LAWN AREA	3	24" BOX	STANDARD TRUNK TIPUANA TREES	
SIGNAGE	6	ONE GALLON	MT TAMBORTHIA	
	1	FLAT	MIXED COLOR BACOPA	
GRF TO PURCHASE				
THREE SITES		412 SQ FT	SONORA SHINE 2-3"	
STATEMENT TREE		3	2-3' BOULDERS	
SIGN		6	1-3' BOULDERS	



ARCHITECTURAL REVIEW AND DESIGN COMMITTEE





MISSION PARK CLUBHOUSE TWO PLANTS LIST

Name	Location	Photo
<i>Arbutus Unedo Strawberry Tree:</i> 24" Box	1 Bocci Ball Court	
<i>Parkinsonia Aculeata Mexican</i> Palo Verde: 48: Box	3 Statement Tree Box	
<i>Green Society Garlic: One Gallon</i>	3 Statement Tree Box 4 Pickleball Planters	
<i>Agapanthus Storm Cloud:</i> One Gallon	3 Statement Tree Box 4 Pickleball Planters	
<i>Daylily Yellow:</i> One Gallon	3 Statement Tree Box 4 Pickleball Planters	



ARCHITECTURAL REVIEW AND DESIGN COMMITTEE

MISSION PARK CLUBHOUSE TWO PLANTS LIST

Name	Location	Photo
<i>Orange Cape Honeysuckle:</i> <i>Five Gallon</i>	6 Parking Lot Wall	
<i>Duranta Erecta Sweet Memories:</i> <i>Five Gallon</i>	6 Parking Lot Wall	
<i>Grevillea Lanigera Mt. Tamboritha:</i> <i>One Gallon</i>	8 Mission Park Sign	
<i>Bacopa White and Purple Mix:</i> <i>One Gallon</i>	8 Mission Park Sign	
<i>Tipuana 24" Box</i>	7 Lawn Area	