



---

## Board of Directors

---

### Agenda

Clubhouse Four  
Tuesday, April 13, 2021, 10:00 a.m.  
Via Live Stream

To view the live GRF Board meeting:

- Go to [www.lwsb.com](http://www.lwsb.com)
- The live streaming uses YouTube live and terminates at the close of the meeting

- 1) Call to Order/Pledge of Allegiance
- 2) Roll Call
- 3) President's Comments
  - a) Announcements
- 4) Shareholder/Member Comments
  - a) Written, submitted prior to meeting
  - b) Verbal, via live streaming

*Note: Foundation Shareholder/Members are permitted to make comments before the meeting business of the Board begins. The Open Meeting Act allows boards of directors to establish reasonable time limits for the open forum and for speakers to address the board. (Civ. Code §4925(b).) Time limits, per speaker, are limited to:*

- 4 - minute limit per speaker, when there are no more than 15 speakers
  - 3 – minute limit per speaker, 16 - 25 speakers
  - 2 – minute limit per speaker, over 26 speakers
- 5) New Business
    - a) General
      - i. Storm Drain Catch Basin Improvements (handout)
  - 6) Board Member Comments
  - 7) Next Meeting/Adjournment

Next regular GRF Board of Directors meeting, Tuesday, **April 27, 2021, 10:00 a.m.**,  
Clubhouse Four.

THIS  
PAGE  
LEFT  
BLANK  
INTENTIONALLY



Golden Rain Foundation

Golden Rain Foundation

Leisure World, Seal Beach

---

## BOARD ACTION REQUEST

---

**TO:** GRF BOARD OF DIRECTORS  
**FROM:** PHYSICAL PROPERTIES COMMITTEE (MW)  
**SUBJECT:** CAPITAL FUNDING REQUEST -CITY OCTA- STORM DRAIN SCREENS  
**DATE:** APRIL 8, 2021  
**CC:** FILE

---

The City of Seal Beach / Orange County Transportation Authority has made available a grant designed to mitigate pollution entering the waterways through the community storm drains. The total construction cost is estimated to be \$300,000, with a 20% minimum match provided (\$60,000).

This is based on the following:

- 157 qualifying LW inlet locations, some of which require inlet and/or grates.
- Assumes 10% construction contingency (\$25k), which would only be charged if used.
- Assumes 10% inspection cost (\$25k), of which only, the expensed portion would be invoiced.
- The cost proposal was generated based on OCTA/OCPW master agreement pricing, which is fair compared to competitive bidding.
- Total OCTA grant application request is \$300,000, which requires a 20% match (\$60k). This number is conservative and assumes we spend the full \$50k contingency and inspection cost.

It is requested by the City for GRF to provide a commitment letter to the City and OCTA indicating that GRF will commit to the 20% match, if grant is awarded.

Details of the project are attached.

At the regular Physical Property Committee meeting on April 7, 2021, the Committee duly moved and approved to recommend the GRF Board approve this project.

I move to approve the installation of storm drain screens throughout the community, in an amount not to exceed \$60,000, Capital Funding, and authorize the President sign the Memorandum of Understanding.

3/10/2021

Iris Lee  
Deputy Public Works Director/City Engineer  
Public Works Department  
City of Seal Beach - 211 Eighth Street, Seal Beach, CA 90740

Denice Bailey  
Project Engineer  
Public Works Department  
City of Seal Beach - 211 Eighth Street, Seal Beach, CA 90740

Dear Iris and Denice:

G2 Construction (G2) is pleased to offer this Proposal to the City of Seal Beach and Leisure World to install storm drain screens throughout Leisure World. This proposal is based on our evaluation of the Inlets on the Storm Atlas Maps and includes our recommendations and cost estimate to successfully complete the work.

Our proposed project includes custom fabrication and installation of storm water screens inside 157 of Leisure World's Inlets. All grated Inlets in streets and parking lots will receive a stainless-steel screen that filters to 5mm. G2's screens are CA State Waterboard certified as *Full Capture Systems*, and this project will make Leisure World's streets and parking lots fully compliant with the State's Trash Amendment regulations.

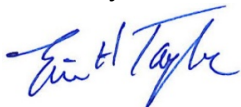
The total estimated cost to complete the proposed scope of work is \$300,000. This amount includes a 10% contingency and 10% for inspection related costs.

As we discussed, this Leisure World / City of Seal Beach project is an ideal candidate to win a 2021-22 OCTA Environmental Cleanup Program "Project X" grant that will cover 80% of the costs. With a winning grant application, OCTA's grant will pay \$240,000 and Leisure World / City would be responsible for \$60,000.

This project will be very similar to the past successful projects that the City of Seal Beach and G2 Construction has performed. The City's excellent history of winning OCTA grants and G2's deep experience installing effective projects across Orange County points to an extremely high probability of receiving an OCTA grant.

Attached is a summary of our Proposal for your evaluation. If you have any questions or feedback, then please do not hesitate to contact me. I look forward to the opportunity of working with you and the City once again.

Sincerely,



Eric H. Taylor, LEED AP BD+C, PMP  
VP, Projects & Business Dev  
G2 Construction, Inc.  
714.679.2550 [www.g2construction.com](http://www.g2construction.com)

City of Seal Beach  
LEISURE WORLD – OCTA Tier 1 Project X Grant  
CPS-Mod™, GITS™, FXSS™ & ARS-CL™ Installations

## Evaluation & Proposal Summary

G2 Construction (G2) performed a visual review of Leisure World's *Inlets* via Google Earth, and found all 222 inlets on the Storm Drain Atlas Maps. G2 also performed a half-day field review of Leisure World's inlets in conjunction with Ms. Bailey in early 2020 to collect measurements of a small sample of Inlets.

Of the 222 total inlets inside Leisure World, we found 157 to be good candidates for storm water screens that qualify for OCTA's Project X grant. The 54 inlets found between buildings and not located on streets or parking areas, are not included for screens in this proposal. Also, 14 very small, grated inlets were excluded because they were too small for screens.

All 157 targeted storm water inlets have grate covers, except one. Forty-eight of the inlets have curb-openings with grates in front.

The following Attachments help to clarify this proposal:

- A. Map showing the location of the 157 targeted inlets.
- B. Leisure World's different inlet types.
- C. G2 Construction's devices to be installed.
- D. Scope and Cost Estimates

After G2 evaluated each inlet type we identified the potential screen types, and then applied G2's Master Agreement pricing with OC Public Works / OCTA, which is only available to Cities in Orange County. Therefore, we are confident in our cost estimate and this proposal's excellent value.

G2 is pleased to provide this Proposal to install our Storm Water screens in all 157 of Leisure World's *storm water Inlets* on paved streets and parking areas. Our patented CPS-Mod™ and GITS™ screens are proven effective at stopping trash and debris 5mm or larger from getting into waterways and the ocean, and are certified by the CA State Waterboard as *Full Capture Systems* and meet the State's Trash Amendment regulation.

Additionally, all 48 *Inlets* with curb-openings will get a second screen, G2's FXSS or ARS-CL™, to stop trash and debris from entering the Inlet through the curb opening. These stainless-steel screens are effective, rugged and look good. G2 will install over 300 linear feet of curb-opening screens.



## PROJECT MAP

### Leisure World's 157 Inlets in Streets & Parking Lots



= Curb-Openings with Grates (48)



= Grates only (109)





# Leisure World – Inlet Types

## EXAMPLES

### Inlets with Curb-Openings and Grates

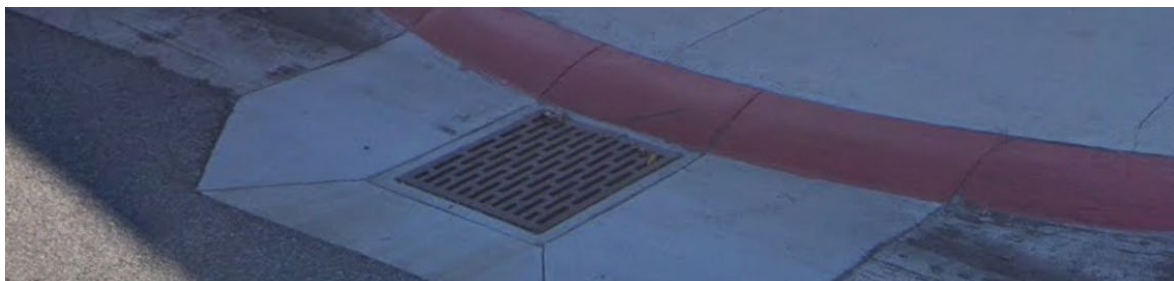
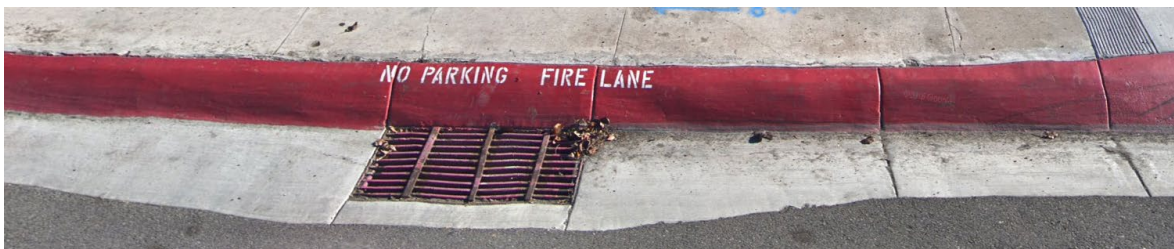
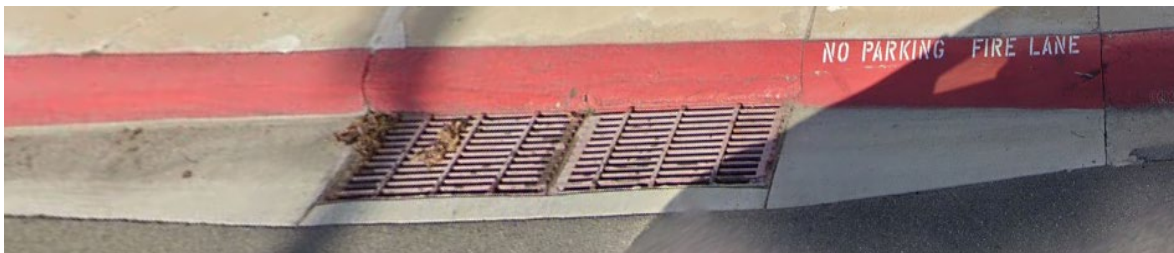


### Inlet with Curb-Opening, No Grate





## LW's Inlets with Grates Only - Examples



# PROJECT STORM WATER SCREENS by Leisure World Inlet Type

**Inlets with Curb-Openings and Grates** to receive both a Curb-Opening screen and a *Full Capture System* screen.

1.A    **G2 FXSS™ Curb-Opening Fixed Screens**    304 Stainless Steel with ¾" Holes



or

1.B    **G2 ARS-CL™ Curb-Opening Retractable Screens**    304 Stainless Steel with ¾" Holes



\* Leisure World's curb opening heights are shorter than typical. ARS-CL screens that hinge and swing inward may not be the best option. FXSS customized fixed screens are made of the same ARS-CL materials but have no moving parts. There is no concern of flooding due to fixed screens since all locations have grates in front.

AND

2.    **G2 CPS-Mod™ patented Connector Pipe Screen Full Capture System.** 304 Stainless Steel with 5mm filtration holes. Installed inside the Inlet catch basin around the discharge pipe.





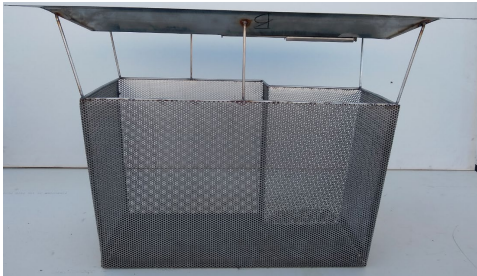
**Inlets with Grates Only** to receive one *Full Capture System* screen inside the Inlet.

- A. **G2 CPS-Mod™** patented **Connector Pipe Screen Full Capture System**. 304 Stainless Steel with 5mm filtration holes. Installed inside the Inlet catch basin around the discharge pipe.



OR When space is limited in the Inlet:

- B.1 **G2 GITS™ Grated Inlet Trash Screen Full Capture System Screen** 304 SS with 5mm Holes  
Installed directly under the grate.  
Full-Size



- B.2 LoPRO GITS for shallow inlets.



## PROJECT SCOPE & COST ESTIMATE

### Project Scope

G2 will field review and measure all 157 grated Inlets located on streets and in parking lots, then custom design a CPS-Mod™ or GITS™ device for each. For the 48 grated Inlets with a curb-opening, G2 will also custom design 90 unique FXSS™ or ARS-CL™ screens to fit in the curb-opening. G2 will fabricate the 247 stainless steel screens and custom install each device.

Total Inlets receiving *Full Capture System* screens: 157

Total unique devices fabricated and installed: 247

Photo of each installed Inlet: 157

Inlets cleaned before installation: 157

Traffic Control deployed per WATCH Manual where needed.

Prevailing wages paid to field installers. Certified Payroll provided to the City.

Performance Bonds.

Project management and clear communication with City engineers, inspectors, and staff.

Assistance in writing the 2021 OCTA Grant application, due May 6, 2021.

### Cost Estimate

#### G2 Construction

\$ 215,000 Measurement, Fabrication, and Installation Screens

\$ 12,500 Mobilization

\$ 7,065 Inlet Cleaning

\$ 7,500 Traffic Control and grate removal

\$ 7,935 Performance Bonds

\$ 250,000

\$ 25,000 Contingency (10%)

#### City of Seal Beach

\$ 25,000 Inspection costs (10%)

=====

\$ 300,000 Total Project Cost



April 5, 2021

City of Seal Beach - City Council  
211 8<sup>th</sup> Street  
Seal Beach, CA 90740

**SUBJECT:    ORANGE COUNTY TRANSPORTATION AUTHORITY –  
              2021 PROJECT X TIER 1 CALL FOR PROJECTS COMMITMENT LETTER**

Dear City of Seal Beach Mayor and Councilmembers:

On behalf of the Golden Rain Foundation (GRF), please accept this commitment letter in response to Orange County Transportation Authority's 2021 Project X Tier 1 Call for Projects. GRF understands that the Project X funding is designed to mitigate pollution entering into the waterways. As the funding guidelines stipulate eligible applicants to be one of the 34 Orange County cities, GRF hereby requests the City of Seal Beach to act as the lead agency.

GRF is a non-profit corporation that administers the shared Trusty property within Leisure World Seal Beach. The Priority Land Use storm drain catch basins are owned and maintained by GRF. GRF proposes to install Connector Pipe Screens and Automatic Retractable Screens at these locations to capture visible forms of water pollutants. The total construction cost is estimated to be \$300,000, where a 20% minimum match will be provided (\$60,000).

The City of Seal Beach and GRF will enter into a Memorandum of Understanding within 30 days of OCTA project award, if not earlier, documenting each party's responsibilities. The City of Seal Beach would provide grant and project administration. GRF would provide the Project's monetary funding of up to \$60,000 and access to the City and its contractor, as required to complete the Project in a timely and satisfactory manner. GRF would further reimburse the City for Project expenses, up to the committed matching fund amount, upon 30 days of invoice.

GRF looks forward to this partnership with the City of Seal Beach to improve overall water quality in Orange County.

Sincerely,

Susan Hopewell, President  
Golden Rain Foundation